

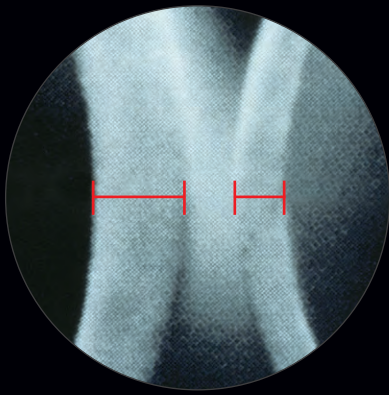
# *The Stretch Advantage*

*for Peripheral Reconstructions*

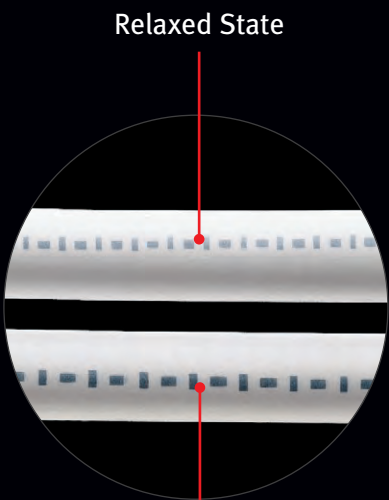


**PERFORMANCE** through innovation

**GORE**  
**GORE-TEX®**  
STRETCH  
VASCULAR GRAFT



Wall Thickness Comparison of Standard and Thin-walled 6 mm Vascular Grafts



Relaxed State

Moderate Tension for Implantation

*“Intraoperatively the grafts proved to be soft and flexible with good handling and suturing characteristics...GORE-TEX® Suture reduces the anastomotic bleeding. Moreover, the graft easily adapts itself to the anastomotic shape”<sup>1</sup>*

*“Early experience with this graft in arterial reconstructive surgery showed a marked reduction in needle-hole bleeding.”<sup>2</sup>*

*“The GORE-TEX® Stretch Vascular Graft offers improved anastomotic conformability during implantation.”<sup>3</sup>*

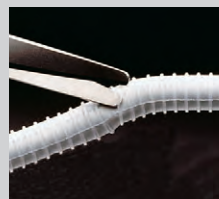
*“...increased resistance to kinking and better matching of the prosthesis to the bevel of the arteriotomy may lead to less early post-operative thrombosis...”<sup>4</sup>*

## Combining The Best



### Stretch

- Kink resistance in area of angulation
- Improved handling, soft and supple
- Conformability at the anastomosis
- Forgiveness in length matching
- The security of reinforced GORE-TEX® Vascular Grafts



### Removable Rings

- Customization of the ring segment to each patient's unique anatomy
- Uncompromised graft integrity after ring removal
- Secure ring adherence
- Added kink and compression resistance

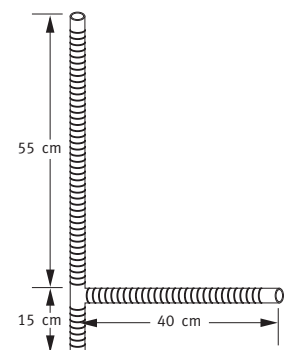


### Thin Wall

- Improved handling
- Better tissue approximation
- Enhanced suturability

## Axillobifemoral GORE-TEX® Vascular Graft

CATALOGUE NUMBER	LENGTH (cm)	INTERNAL DIAMETER (mm)
<i>Available in two lengths</i>		
SAX01 or SAX01D	70 x 40	8 x 8
SAX02 or SAX02D	90 x 40	8 x 8



Devices with SAxx and SAxxD catalogue numbers are functionally identical. 'D' suffix denotes European manufactured devices. Sizing, availability and pricing varies by country. Please check with your Gore representative for availability.


**GORE-TEX® Stretch Vascular Graft**

CATALOGUE NUMBER	INTERNAL DIAMETER (mm)	RINGED SECTION LENGTH (cm)	LENGTH (cm)
<b>THIN-WALLED, REMOVABLE RINGED</b>			
SRRT05030040L	5	30	40
SRRT05030070L	5	30	70
SRRT05060070L	5	60	70
SRRT06030040L	6	30	40
SRRT06030070L	6	30	70
SRRT06030080L	6	30	80
SRRT06040050L	6	40	50
SRRT06050050L	6	50	50
SRRT06060060L	6	60	60
SRRT06060070L	6	60	70
SRRT06060080L	6	60	80
SRRT06060100L	6	60	100
SRRT06070070L	6	70	70
SRRT06070080L	6	70	80
SRRT08030040L	8	30	40
SRRT08030070L	8	30	70
SRRT08030080L	8	30	80
SRRT08040050L	8	40	50
SRRT08070070L	8	70	70
SRRT08070080L	8	70	80
SRRT08070100L	8	70	100
<b>THIN-WALLED</b>			
ST0604	6	N/A	40
ST0605	6	N/A	50
ST0606	6	N/A	60
ST0607	6	N/A	70
ST0608	6	N/A	80
ST0609	6	N/A	90
ST0704	7	N/A	40
ST0707	7	N/A	70
ST0708	7	N/A	80
ST0804	8	N/A	40
ST0805	8	N/A	50
ST0807	8	N/A	70
ST0808	8	N/A	80
ST0809	8	N/A	90
<b>STANDARD-WALLED</b>			
S0604	6	N/A	40
S0605	6	N/A	50
S0607	6	N/A	70
S0608	6	N/A	80
S0609	6	N/A	90
S0704	7	N/A	40
S0707	7	N/A	70
S0708	7	N/A	80
S0804	8	N/A	40
S0805	8	N/A	50
S0807	8	N/A	70
S0808	8	N/A	80
S0809	8	N/A	90

## GORE-TEX® Suture... Offering The Most Advanced Needle Technology

'c' series needles offer:

- Decreased penetration force
- Improved resistance to bending

The GORE-TEX® Suture is a non-absorbable porous monofilament made of expanded PTFE, and is available in several configurations where the diameter of the thread closely approximates that of the needle. This unique feature can minimize suture hole bleeding, reduce the need for costly coagulants, and save blood and valuable operating room time.

## Commonly Requested GORE-TEX® Sutures Used for Peripheral Vascular Reconstructions with the GORE-TEX® Stretch Vascular Graft

CATALOGUE NUMBER	LENGTH (cm)	THREAD SIZE	NEEDLES
<b>Proximal Anastomoses</b>			
<b>5N08</b>	91	CV-5	PT-13
5N10	91	CV-5	PT-17
<b>5N02</b>	91	CV-5	TTc-13*
6M08	76	CV-6	PT-13
<b>6M10</b>	76	CV-6	TTc-12
<b>Distal Anastomoses</b>			
<b>6K06</b>	61	CV-6	PT-9
6M08	76	CV-6	PT-13
<b>6M02</b>	76	CV-6	TTc-9*
7M02	76	CV-7	TTc-9*
7M12	76	CV-7	TTc-12*

Catalogue numbers in bold type indicates 1:1 needle to thread ratio to minimize suture hole bleeding.

\* 'c' denotes 'c' series, premium needle

 Consult Instructions for Use



**W. L. GORE & ASSOCIATES, INC.**  
Flagstaff, AZ 86004

+65.67332882 (Asia Pacific)    800.437.8181 (United States)  
00800.6334.4673 (Europe)    928.779.2771 (United States)

[goremedical.com](http://goremedical.com)

Products listed may not be available in all markets. GORE®, GORE-TEX®, PERFORMANCE THROUGH INNOVATION, and designs are trademarks of W. L. Gore & Associates.  
©1999, 2004, 2006, 2010 W. L. Gore & Associates, Inc. AD0411-EN4 FEBRUARY 2010

## References

1. Chiesa R, Melissano G, Castellano R, et al. A new ePTFE stretch graft for aorto-iliac reconstructions. *Journal of Cardiovascular Surgery* 1995;36(2):135-141.
2. Simoni EJ, Jain KM, Munn JS. Use of 6 mm stretch PTFE grafts for early use in hemodialysis. In: Henry ML, Ferguson RM, eds. *Vascular Access for Hemodialysis III*. Chicago, IL: W.L. Gore & Associates, Inc. & Precept Press; 1993:142-145.
3. Derenoncourt FJ. PTFE for A-V access: six years of experience with 310 reinforced and stretch grafts. In: Henry ML, Ferguson RM, eds. *Vascular Access for Hemodialysis IV*. Chicago, IL: W.L. Gore & Associates, Inc. & Precept Press; 1995:286-291.
4. Tordoir JHM, Hofstra L, Leunissen KML, Kitslaar PJEHM. Early experience with stretch polytetrafluoroethylene grafts for haemodialysis access surgery: results of a prospective randomised study. *European Journal of Vascular & Endovascular Surgery* 1995;9(3):305-309.

## Supporting Literature

AbuRahma AF, Robinson PA, Stuart SP, Witsberger TA, Stewart WA, Boland JP. Polytetrafluoroethylene grafts in infrainguinal arterial revascularization. *Archives of Surgery* 1993;128(4):417-422.

Burger DHC, Kappetein AP, van Bockel JH, Breslau PJ. A prospective randomized trial comparing vein with polytetrafluoroethylene in above-knee femoropopliteal bypass grafting. *Journal of Vascular Surgery* 2000;32(2):278-283.

Bunt TJ, Moore W. Optimal proximal anastomosis/tunnel for axillofemoral grafts. *Journal of Vascular Surgery* 1986;3(4):673-676.

Landry GJ, Moneta GL, Taylor LM II, Porter JM. Axillofemoral bypass. *Annals of Vascular Surgery* 2000;14(3):296-305.

Lauterbach SR, Torres GA, Andros G, Oblath RW. Infragenicular polytetrafluoroethylene bypass with distal vein cuffs for limb salvage. A contemporary series. *Archives of Surgery* 2005;140(5):487-494.

Patterson RB, Fowl RJ, Kempczinski RF, Gewirtz R, Shukla R. Preferential use of ePTFE for above-knee femoropopliteal bypass grafts. *Annals of Vascular Surgery* 1990;4(4):338-343.

Prendiville EJ, Yeager A, O'Donnell TF II, et al. Long-term results with the above-knee popliteal expanded polytetrafluoroethylene graft. *Journal of Vascular Surgery* 1990;11(4):517-524.

Quiñones-Baldrich WJ, Prego AA, Uclay-Gomez R, et al. Long-term results of infrainguinal revascularization with polytetrafluoroethylene: a ten-year experience. *Journal of Vascular Surgery* 1992;16(2):209-217.

Rosenthal D, Evans RD, McKinsey J, et al. Prosthetic above-knee femoropopliteal bypass for intermittent claudication. *Journal of Cardiovascular Surgery* 1990;4(4):462-468.

Veith FJ, Gupta SK, Ascer E, et al. Six-year prospective multicenter randomized comparison of autogenous saphenous vein and expanded polytetrafluoroethylene grafts in infrainguinal arterial reconstructions. *Journal of Vascular Surgery* 1986;3(1):104-114.

## Supporting Videos

**Femorotibial Bypass Procedure Utilizing GORE-TEX® Stretch Vascular Graft with Removable Rings**, Luis A. Sanchez, M.D.

**Below Knee Ilio-Popliteal Bypass Using a Thin-Walled FEP-Ringed GORE-TEX® Vascular Graft with Removable Rings**, William R. Flinn, M.D.

**Axillofemoral Bypass with the FEP-Ringed GORE-TEX® Vascular Graft**, John M. Porter, M.D., F.A.C.S. and Lloyd M. Taylor, M.D., F.A.C.S.

## Record and Services

### Record

- More than 25 million clinical implants of Gore Medical Products
- More than 1,000 clinical studies published by renowned physicians
- More than 30 years of vascular graft service
- Worldwide vascular society educational support
- Worldwide support of vascular research
- World class in-house vascular research facility

### Services

- Vascular histology laboratory service
- Extensive video library available
- Medical references and information resources provided
- Overnight delivery provided
- Technical support to surgeon and hospital

### Products

- Wide selection of products tailored to your needs
- Market leader in ePTFE Medical Products
- Leader in ePTFE technology